



Republika e Kosovës
Republika Kosova - Republic of Kosova



Municipality of
Shtime/Štimlje



Maintenance Plan of Public Open Spaces in the Municipality of Shtime/Štimlje 2016-2021

**Maintenance Plan
of Public Open Spaces in the
Municipality of Shtime/Štimlje
2016-2021**

Revitalization of existing spaces, creation of new spaces and their monitoring in the Municipality of Shtime/Štimlje with secure, sustainable and attractive Public Open Spaces for citizens and visitors

March, 2016

Acknowledgment

This plan has been developed by the working group of the municipality of Shtime/Štimlje, where the responsible institution is the Department for Public Services, supported and in close cooperation with the coordination group, project officers and responsible consultants of project DEMOS/Helvetas-Swiss Intercooperation, funded by Swiss Cooperation Office (SCO), which we thank for their contribution. Working group and coordination group for developing the maintenance plan and investment plan for Public Open Spaces in the municipality of Shtime-Štimlje, identified the Public Open Spaces in the field and planned maintenance activities.

Working Group

1. **Ardiana Rama-Gashi** - Coordinator
2. **Mehdi Salihu** - Member
3. **Shqipe Rexhaj** - Member
4. **Albulena Emini** - Member
5. **Sabri Çerkini** - Member
6. **Adem Bajrami** - Member

Coordination Group

1. **Ardiana Rama-Gashi** - Director of the Department for Public Services
2. **Kimete Ferati-Ukaj** - Budget and Finance Officer
3. **Mehdi Salihu** - Director of the Department for Planning, Urbanism and Environmental Protection

Support team

1. **Besnik Keka** - Local Consultant, CDF/DEMOS
2. **Teuta Jaha-Hoxha** - Project Officer - DEMOS/Helvetas-Swiss Intercooperation
3. **Majlinda Jupolli** - Project Officer - DEMOS/Helvetas-Swiss Intercooperation

Table of content

1. Introduction	5
1.1. Municipality profile	5
1.2. POS functions	5
1.3. Scope of POS maintenance plan	6
<i>Definition of POSs included in Maintenance Plan</i>	<i>6</i>
1.4. Governing principles	7
1.5. Reference documents	7
<i>Legal framework</i>	<i>7</i>
2. State of play and analysis of public open space	9
2.1. State of play of POS	9
<i>Data on current POS surfaces</i>	<i>10</i>
<i>Basic data on PS (parks and recreation):</i>	<i>10</i>
<i>Quality of existing POS</i>	<i>11</i>
<i>Use of POS</i>	<i>11</i>
<i>Use of POS</i>	<i>12</i>
2.2. Existing contracts for POS management	12
2.3. PSs maintenance operating costs in the past three years	13
2.4. Graphic and tabular data on existing POS	14
2.5. Analysis of maintenance activities for areas of maintenance	16
3. Vision, objectives and strategy on ps	16
3.1. Municipality's vision on POS	16
<i>Vision statement for municipality of Shtime/Štimlje from MDP</i>	<i>16</i>
<i>Vision statement for POS maintenance for municipality of Shtime/Štimlje</i>	<i>16</i>
3.2. Goals and objectives for POS maintenance	16
4. Financial plan	17
<i>Summary table for the annual POS maintenance</i>	<i>18</i>
<i>Costs based on the period of the year</i>	<i>18</i>
<i>Monthly maintenance -2016</i>	<i>18</i>
4.1. Need for new budget for continuous maintenance	19
4.2. Cash flow of maintenance costs and calculation of seasonal costs	22
4.3. Maintenance costs for the plan period 2016-2019	23
5. Public awareness	26
5.1. Municipal strategy for community activities	26
<i>Activities</i>	<i>27</i>
<i>Promoting "Best maintained locality"</i>	<i>27</i>
6. Monitoring and review	27
<i>Completion and revision of POSMP</i>	<i>28</i>

1. INTRODUCTION

1.1. Municipality profile

Municipality of Shtime/Štimlje is located in the central part of Kosovo, or within coordinates 42.43, 21.03. Territory of Municipality of Shtime/Štimlje has an area of 134 km² (13,450.8 hectares), namely 1,2 % of Kosovo territory.

Approximately 48,4% of the municipality is agricultural land, and agriculture is one of developmental priorities of the municipality. Municipality of Shtime/Štimlje has 27,324 inhabitants (a statistic taken from the Population Census in 2011 for resident population), with 73.8% of population living in the villages of the municipality. Municipality consist of 23 settlements, including the city of Shtime/Štimlje and 22 villages, out of which 13 are located in the hilly-mountainous part, whereas 9 of the villages are in the plain area. All roads connecting villages of municipality with Shtime/Štimlje are asphalted.

In the city of Shtime/Štimlje live 7107 inhabitants, or 26.2% of M. of Shtime/Štimlje. The intersection of important road axis in the direction Prizren – Prishtinë/Pristina and Prizren – Ferizaj/Urosevac – Shkup/Skopje are segments with most importance for further municipal development. Municipality of Shtime/Štimlje is bordered with the Municipality of Ferizaj/Urosevac, Shtime/Štimlje and Suharekë/Suva Reka. The city of Shtime/Štimlje is 31 km distance from Kosovo capital city (Prishtina/Pristina), 48 km from Prizren and 13 km from Ferizaj/Urosevac. Shtime/Štimlje is the crossroad of regional roads.

Maintenance of public spaces is determined as one of three main pillars of municipal policies. “Good spatial and regulatory planning and connection to the public spaces contributes in revitalization of municipality and creates opportunities for formal and non-formal recreation activities.”

1.2. POS functions

Public Open Spaces refer to spaces that can be accessed by public and are intended for formal, non-formal, recreation, cultural activities and other functions for community. As municipal assets, Public Open Spaces promote healthy communities.

1. **Experience the nature:** an opportunity for citizens to experience rich, natural, archaeological environments, etc.
2. **Recreation:** provision of various opportunities for recreation in natural environments, such as walking, running, cycling, social gatherings and cultural events.
3. **Education:** PS may serve as natural classrooms, with the possibility of teaching and researching with pupils and children of different ages.
4. **Urban design:** environments in PS are characterized with limitations to constructional developments and provide good landscapes and vistas, define urban borders, and discourage uncontrolled urban extensions.

5. **Creation of heritage:** conversation of important features of natural environment in the city of Shtime/Štimlje is a high priority for citizens and program ambitions concerning riverbeds, green corridors, railways, roads, etc.
6. Cultural events, and public education on conversation of nature and environment and raising citizens' awareness.
7. Microclimatic regulating functions, conversation of flora and fauna diversity, CO2 balance, motivation and inspiration for culture, art, etc.

Municipality of Shtime/Štimlje, namely Department for Public Services, is implementing the project. Also, municipality of Shtime/Štimlje, namely working group supported by DEMOS project, has drafted the POS maintenance plan and investment plan.

1.3. Scope of POS maintenance plan

POS maintenance plan covers parks, squares, cemeteries and not all of the surrounding spaces, such as e.g. road or sidewalk. Currently, markets and sport areas are not covered in the POS maintenance plan because markets are managed by War Veterans Association, whereas sport areas are located within school spaces and likewise are managed by the schools, whereas other sport areas located outside school facilities are managed by sport clubs. The plan is drafted for the medium-term period 2016-2021.

Definition of POSs included in Maintenance Plan

Maintenance and investment plan has been drafted for the medium-term period. The following spaces are included in the first implementation period:

Table 1: POS covered in MP

Park		Squares		Cemeteries	
1	Ahmet Shtimja	1	KLA Square	1	Cemeteries of Martyrs and Veterans in Shtime/Štimlje
2	Muzeqine	2	Martyrs Square	2	Muslim cemeteries
3	Petrove			3	Orthodox cemeteries
4	Rashince			4	Cemeteries of Martyrs in Mollopolc
5	Pine			5	Memorial Complex in Reçak
6	MFMC				
7	K. Kumanova				
8	Park at Youth Centre				
9	Sidewalk trees				

In addition to the abovementioned spaces, trees along main roads are a characteristic element for the urban part of the city of Shtime/Štimlje.

Upon review, the plan will include other public open spaces, depending on the needs/requirements and budgetary opportunities. Depending on the content of public spaces, the main fields of activities necessary for maintenance of Public Open Spaces have been identified.

Based on inventory and usage frequency analysis, POS with priority of maintenance and investments have been identified. Department for Public Services and Department for Urbanism have carried inventory using QGIS application.

1.4. Governing principles

The Municipality of Shtime/Štimlje has approved *the Municipal Development Plan, Urban Development Plan and Urban Regulatory Plan* in the city of Shtime/Štimlje. These documents, in general address the issue of public open spaces maintenance at a small extent. These plans cover the bus stops and parking lots for different localities. Find below some of the municipal objectives foreseen within these plans, which address the space in general.

1.5. Reference documents

Legal framework

Public Open Space maintenance plan for the Municipality of Shtime/Štimlje is a document that should promote common interests of Shtime/Štimlje residents because is related to the needs of inhabitants, organization of green spaces in cities and villages, as well as quality of life. Public Open Spaces maintenance plan for the Municipality of Shtime/Štimlje is based on the legal framework applicable in Kosovo, as well as international principles and conventions concerning the maintenance of public open spaces, as follows:

- Municipal Regulation No. 06/4067, dated 30.12.2005, for Public Services 01;
- Law on Local Self-Government (03/L-040), Official Gazette of RK / Prishtina: year III / No. 28/04, June 2008, Article 17, paragraph p, provision and maintenance of public parks and spaces.
- Law on Spatial Planning (Law no. 04/L-174, 31 July 2013)
- Municipal Development Plan 2009-2020;
- Urban Regulatory Plan for the city of Shtime/Štimlje;
- Urban Development Plan 2009-2020;
- Law No. 03/L-025 on Environmental Protection;
- Local Economic Development Strategy 2014-2018;
- Municipal Budget Medium-Term Framework 2016-2018;
- LEAP (confirm whether the municipality of Shtime/Štimlje has drafted the LEAP; if yes, include in document)

Municipal Regulation for Public Services – The primary goal of this regulation is to improve citizens' living conditions, rules, municipal peace and order, most beautiful appearance of the city and other settlements, protection of living environment, as well as maintenance of hygiene in public spaces, as well as to assign duties and obligations of citizens, households, various communities, associations, businesses, enterprises, institutions, local administration bodies, as well as other entities for maintaining public cleanliness and hygiene in the city of Shtime/Štimlje, and especially determine minimum conditions for maintaining cleanliness and hygiene in suburban settlements and the whole territory of the Municipality of Shtime/Štimlje.

Law on Local Self Government describes the legal base for a sustainable local self-government system in the Republic of Kosovo, and determines its functions, competencies, rights and duties and those of relevant bodies. The Law on Local Self Government defines the rights at the local level, such as the right for:

- Local economic development;
- Urban and rural planning;
- Land use and development;
- Implementation of building regulations and building control standards; protection of local environment; there are full and exclusive powers, insofar as they concern the local interest, while respecting standards set forth in the applicable legislation, and these competencies have been stipulated in Article 17 of the Law on Local Self Government.

The Law on Spatial Planning aims to regulate all issues concerning spatial and urban planning. Based on this law, spatial planning should comply with the principles of protecting natural sources of Kosovo and support the sustainable development; it should also support comprehensive and participatory processes and should involve all interested parties and communities.

The Law on Spatial Planning foresees the integration of professional expertise in the planning system by establishing the planning expert commission (at the local level). Kosovo has two planning levels (national and local) and these types of plans: Kosovo spatial plan, spatial plans for special areas, Municipal Development Plans (MDPs), Urban Development Plans and Urban Regulatory Plans.

Law on Environmental Protection defines the rational use of natural sources and limitation of pollution discharge in environment, damage prevention, rehabilitation and improving the defective environment, improving the environmental conditions in correlation with quality of life and protection of human health.

Medium-Term Budget Framework for the municipality of Shtime/Štimlje is an integral part of Medium-Term Expenditure Framework (MTEF) of Kosovo and was drafted in compliance with budgetary procedures of 2016/2018 and data from the MF through the budget circular 2016/01.

Medium-Term Budgetary Framework (MTEF) of the municipality represents a tool of the budget development process that links available resources with municipality priorities, based on the sustainability of municipal programmes during the next 3 year period. Municipal MTBF will cover explanations of existing and medium-term policies-priorities of Shtime/Štimlje, as well as projections related to the manner how the municipal budget will implement priority projects to be determined according to the budget for 2016-2018.

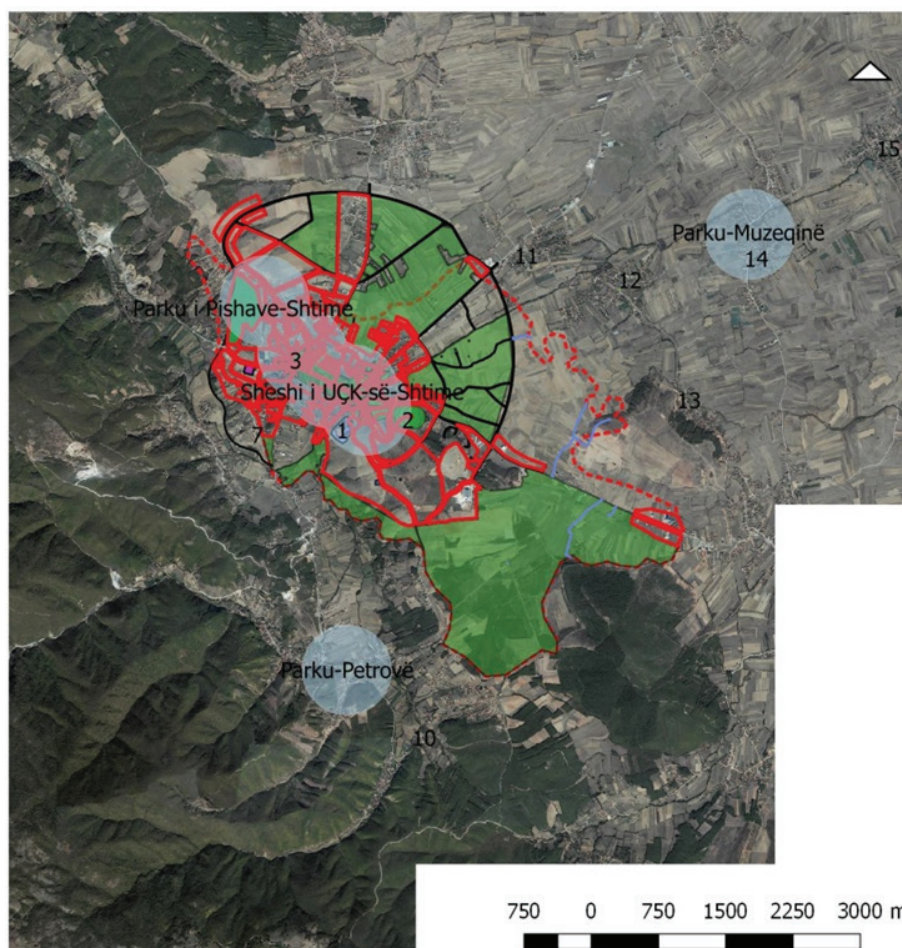
2. STATE OF PLAY AND ANALYSIS OF PUBLIC OPEN SPACE

2.1. State of play of POS

POSS inventory has been done by officials of the Department of Public Services, supported by the Department of Urbanism and DEMOS. POSS have been identified using QGIS, whereas features (attributes) of POS have been completed in tabular forms, based on the prior experience of municipal officials.

Results of such detailed inventory have been presented in thematic maps created in QGIS, as well as in tabular form (annex) developed during regular sessions with DEMOS project consultants.

Figure 1: Shtime/Štimlje: Urban area



These thematic maps also contain PS with attributes based on typology, size, quality and frequen-tation by citizens. Number of inhabitants related to POS frequented part and that identified by QGIS software is around 15.000 inhabitants. Whereas the POS area has been presented in the following table:

Table 2: POS areas

Parks (m²)	216445
Trees	2892 m' (168 trees)
Squares (m²)	620
Cemeteries (m²)	73203

Currently, the municipality although with a limited budget, maintains these spaces with two contracts concluded with two companies. One of them is a regional company, whereas the other is private. The goal is, after the drafting of this plan, to increase the budget dedicated for their maintenance.

Data on current POS surfaces

With the purpose of giving the citizens of Shtime/Štimlje an overall idea on the current PS surface, from the abovementioned inventorying we have provided data on PS surfaces per capita, which have been presented in the table below. Parking lots and green markets are not covered in this document.

Table 3: Areas for passive and active recreation

PS by typology	Area in (m ²)	No. of inhabitants banorëve	Area of PS in m ² / inh.
Parks / Greenery	216445	15000	14.42
Squares	620	15000	0.04

Table 4: Built areas and others

PS by typology	Area in (m ²)
Parking lots	N/A
Green markets	N/A
Cemeteries	41559
Agricultural areas (UDP)	6135747 (613.57 ha)

Basic data on PS (parks and recreation):

- Current PS areas for active and passive recreation, 14.42 m²/inha. (tab. 1).
- Current areas in terms of access, focused on distance (distance - time) have been presented in thematic maps.
- Connection of PS with green corridors, paths, etc. Currently, it may be stated that POS are indeed sufficient, but not with adequate coverage and well-connected: however, in a long-term, the Municipality of Shtime/Štimlje aims to provide the same at a desired standard level.

Standards aimed/foreseen in municipal plans have been adapted in PSMP as well; municipal government aims to provide PS for active and passive recreation, sufficient both in numbers and areas to fulfil citizens needs in terms of natural content, squares, paths, other spaces distributed so as to closer to the citizens. The targeted quantitative standard for POS in the long-term period entails the protection of current Public Open Spaces and creation of new areas, especially in rural areas.

Quality of existing POS

Qualitative standards of POSs promote the preservation of physical and mental health. The possibility of conducting physical activities, whether active or passive, for participants will be useful in the physical, social and psychological aspect, thereby resulting in reduction of tension, daily stress, promotion of a healthy life of our citizens and stability of the neighbourhoods.

In general, due to the lack of a proper plan, but also due to limited budgetary capacities, POS in the past have not been maintained at proper level.

Use of POS

Figure 2: POS by frequentation



Use of POS

Regarding usage, PSs are in general classified into those with frequent and medium use, and PS that are not used at all.

Table 5: Frequentation of POSs

Frequentation of POSs		
High frequentation	Medium frequentation	Low frequentation
Park "Ahmet Shtimja"	Pine Park (Parku i Pishave)	Park in Muzeqine
Park of MFMC	Park in Petrove	Park in Rashnice
Park "K.Kumanova"	Martyrs Square	
Square of KLA		

2.2. Existing contracts for POS management

In the past (and even now), PSs have been maintained based on service contracts, namely framework contracts for a three-year period, awarded to contracted operators. Out of many shortcomings identified therein, we can mention the following:

- Shortcomings in dividing zones/areas of maintenance,
- Shortcomings in projected maintenance activities,
- Non-concise descriptions of maintenance activities,
- Lack of technical specifications,
- Shortcomings in maintenance planning and dynamics, etc.

Above mentioned shortcomings question the importance of prices offered in previous contracts, whereby as a result of that, monitoring of maintenance could have been difficult.

Department for Public Services is responsible to manage the POS maintenance contract in the Municipality of Shtime/Štimlje. The Inspectorate of environment, operating within the Department for Public Services, inspects the services' quality through field monitoring after completion of activities.

2.3. PSs maintenance operating costs in the past three years

The following table contains data on unit prices for PS maintenance based on the analysis of previous contracts:

Table 6: POS maintenance in the period 2012-2013

POS by typology	Unit/ m ²	Average unit price €/m ²	POS maintenance price
Parks / Greeneries	4218 (Total 216445)	N/A	36,060.00
Parking lots	N/A	N/A	N/A
Squares	620	N/A	N/A
Miscellaneous	N/A	N/A	N/A
Markets	N/A	N/A	N/A
Cemeteries	41559	N/A	N/A
Total for PS maintenance	45777	N/A	36,060.00

Table 7: POS maintenance in the period 2014-2015

POS by typology	Unit / m ²	Average unit price €/m ²	POS maintenance price
Parks / Greeneries	4218 (Total 216445)	N/A	42,000.00
Parking lots	N/A	N/A	N/A
Squares	620	N/A	N/A
Miscellaneous	N/A	N/A	N/A
Markets	N/A	N/A	N/A
Cemeteries	41559	N/A	N/A
Total for POS maintenance	45777	N/A	42,000.00

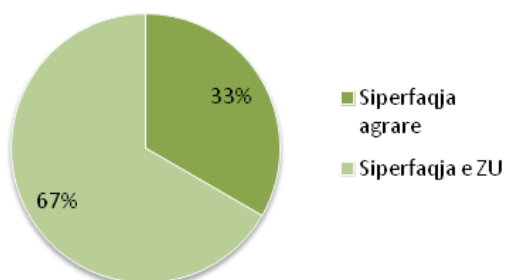
Table 8: Assessment of POS maintenance (2016-2017)

POS by typology	Unit / m ²	Average unit price €/m ²	POS maintenance price
Parks / Greeneries	4218 (Total 216445)	N/A	42,000.00
Parking lots	N/A	N/A	N/A
Squares	620	N/A	N/A
Miscellaneous	N/A	N/A	N/A
Markets	N/A	N/A	N/A
Cemeteries	41559	N/A	N/A
Total for POS maintenance	45777	N/A	42,000.00

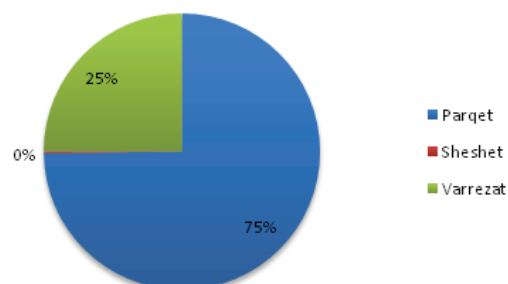
2.4. Graphic and tabular data on existing POS

a) Graphical data

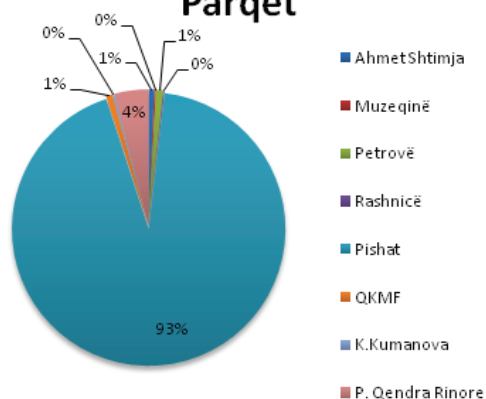
Raporti i sipërfaqeve sipas PZHU



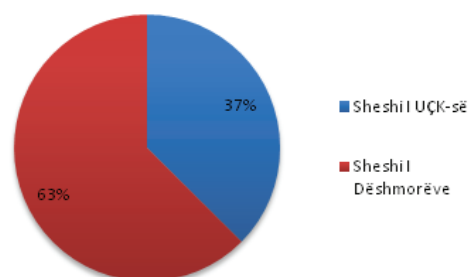
Hapësirat e Hapura Publike



Parqet



Sheshet



b) Tabular data

Table 9: Data on parks

No.	Parks (Name or code)	Area in m ²	Assessment (annual)	Cost (annual) ^a
			Total maintenance costs	Price in €/m ²
1	Ahmet Shtimja	1413	7427.89 €	5.26 €
2	Muzeqine	446	241.64 €	0.54 €
3	Petrove	1898	2089.1 €	1.10 €
4	Rashnice	333	292.44 €	0.88 €
5	Park at MFMC	1691	2404.75 €	1.42 €
6	Pine park	203966	644.90 €	0.01 €
7	Park "Komandant Kumanova"	494	1389.78 €	2.83 €
8	Park at the Youth Centre	8881	710.48 €	0.08 €
	Total for parks	219122	15209.98 €	1.51 €

Table 10: Data on trees

No.	Squares (Name or code)	No. of trees	Total maintenance costs	Price in €/piece
1	Trees	168	1596.0 €	9.5 €

Table 11: Data on squares

No.	Squares (Name or code)	Area in m ²	Total maintenance cost	Price €/m ²
1	KLA square	232	856 €	3.69 €
2	Martyrs Square	388	1564.32 €	4.03 €
	Total for squares	620	2420.32 €	3.86 €

Table 12: Data on cemeteries

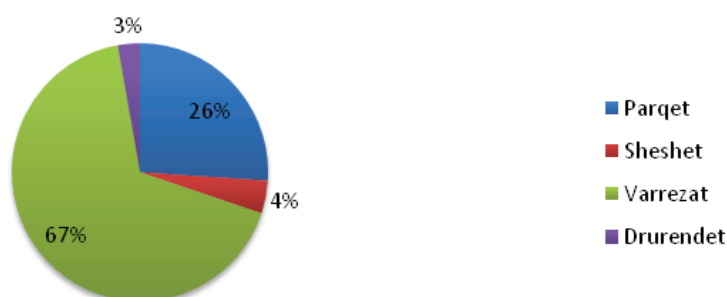
No.	Cemeteries (Name or code)	Area in m ²	Total maintenance costs	Price in €/m ²
1	Martyrs cemetery in Shtime/ Stmilje	19796	12739.28 €	0.64 €
2	Muslim cemeteries	21763	6351.27 €	0.29 €
3	Orthodox C.	2359	704.11 €	0.30 €
4	M. C. Mollopolc	16368	10505.14 €	0.64 €
5	M. C. Reçak	12917	8862.76 €	0.69 €
	Total for cemeteries	73203	39162.56 €	0.51 €

Table 13: Assessment of annual POS maintenance cost

	PS by typology	Area/quantity	Annual assessment (€)	Average price per unit (€)
	Parks	219122 (m ²)	15209.98	0.07
	Trees	168 (cope)	1616.16	9.62
	Squares	620 (m ²)	2420.32	3.86
	Cemeteries	73203(m ²)	39162.56	0.53
	Total Ps in m²	292945 m² POS + 168 trees	59144	3.53 (0.20 €)

Figure 3: Graphical representation of cost by POS typology

Kosto e mirëmbajtjes së HHP ekzistuese



2.5. Analysis of maintenance activities for areas of maintenance

- Cleaning includes the following activities: waste collection and disposal, collection of leaves, cleaning drainage channels, removing graffiti, cleaning of paths and fountains, etc.
- Horticulture activities include activities the following activities: irrigation, mowing, planting, fertilization and airing, and maintenance of low, medium and high greenery, disinsection, etc.
- Activities for maintenance of built environment within the public spaces are as follows: maintenance of paths, urban furniture, playground, fountains, irrigation system, maintenance of memorials, maintenance of lighting, etc.

3. VISION, OBJECTIVES AND STRATEGY ON PS

3.1. Municipality's vision on POS

Vision statement for municipality of Shtime/Štimlje from MDP

"A municipality with efficient administration, quality services in education and health, recreation spaces, planned construction, sustainable environmental development, care for natural and cultural heritage, balanced economic development with advanced agriculture, good conditions for investors – businesses and contemporary infrastructure."

Vision statement for POS maintenance for municipality of Shtime/Štimlje

"A municipality that provides Public Open Spaces that are safe, sustainable and attractive for citizens."

3.2. Goals and objectives for POS maintenance

Goal 1: Increasing maintenance quality in the medium-term period.

Objective 1: Increasing maintenance to a desired standard by implementing the maintenance plan, namely maintenance activities.

Goal 2: POS promotion.

Objective 2: Raising community awareness for POS maintenance during the medium-term period (2016- 2021).

4. FINANCIAL PLAN

The annual maintenance plan is based on current budget of MA of Shtime/Stmilje in terms of creating opportunities of providing satisfactory quality level of POS. The first step of the financial plan is to allow the coverage of maintenance costs for annual planned maintenance activities. Maintenance plan 2015-2019 includes all existing public spaces, as well as maintenance costs for POS which are planned to be built or new investments in spaces, as part of the Investment Plan for the plan's period.

Maintenance plan for the period 2016-2019 is based on four categories:

- Cemeteries
- Park
- Square
- Trees

Public Open Spaces in 2016 include:

- Current POS areas include 171.348 m².
- A total of 18 Public Open Spaces
- Calculated value of annual costs of spaces maintained is EUR 59.144
- Monthly average value of maintenance costs is EUR 4.929
- Maintenance cost of built environment is 11.4000 (19.3% of total annual costs)
- Cleaning activities costs of are 9.197 (15.5% of total annual costs)
- Costs of horticulture activities are 38.547 (65.7% of total annual costs)

Summary table for the annual POS maintenance

Table 14: Summary table for the annual POS maintenance

Number of spaces	18
annual maintenance value	59,144
Average monthly value of maintenance	4,929

Maintenance categories		In % Euro	m ²	In % m ²	Number of POS
Cemeteries	40,247	68.0%	133,588	78.0%	5
Park	15,833	26.8%	36,968	21.6%	9
Square	2,420	4.1%	742	0.4%	2
Trees	645	1.1%	50	0.0%	2
Total	59,144	100.0%	171,348	100.0%	18

Maintained areas	In Euro	In %	In m ²	Cost for
BE-Built environment	11,400	19.3%	482	23.63
CA-Cleaning activities	9,197	15.5%	102,108	0.09
H-Horticulture activities	38,547	65.2%	68,757	0.56
Total	59,144	100.0%	171,348	0.35

Maintained areas	January-June 2016	July-December/2016	Jan-June 2016 in %	July-December/2016 in %
BE-Built environment	7,221	4,180	63.3%	36.7%
CA-Cleaning activities	5,064	4,133	55.1%	44.9%
H-Horticulture activities	19,455	19,092	50.5%	49.5%
Total	31,739	27,405	53.7%	46.3%

Costs based on the period of the year

Period	Value	In %
January-June 2016	31,739	53.7%
July-December/2016	27,405	46.3%
Total	59,144	100.0%

Monthly maintenance -2016

Year/2016	Maintenance value	In %
January	62	0.1%
February	671	1.1%
March	8,446	14.3%
April	4,313	7.3%
May	8,438	14.3%
June	9,809	16.6%
July	8,642	14.6%
August	8,521	14.4%
September	5,010	8.5%
October	5,043	8.5%
November	147	0.2%
December	41	0.1%
Total	59,144	100.0%

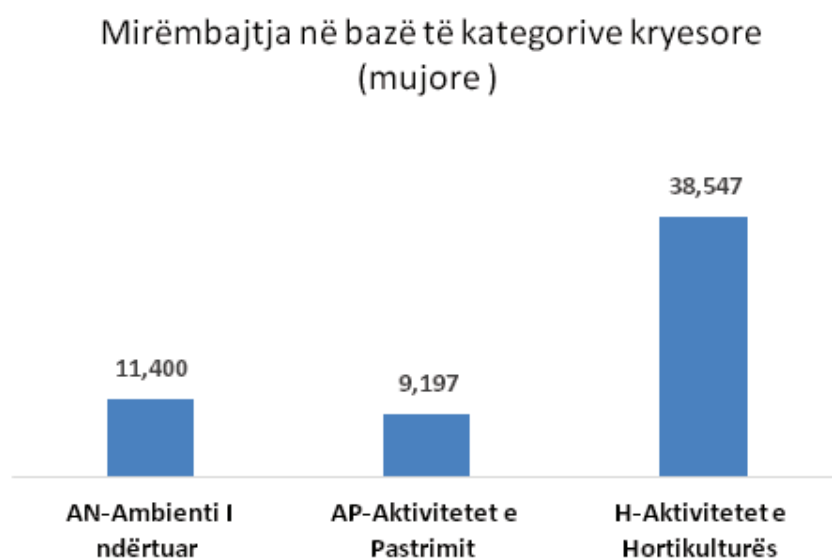
4.1. Need for new budget for continuous maintenance

The structure of POS maintenance costs is greatly represented by horticulture activities which amount to EUR 38.547, or expressed in percentage 65.2% of total costs. High concentration of horticulture costs is based on the needs for maintaining green areas.

Table 15: Maintenance by categories

Category	Total	In %
BE-Built environment	11,400	19.3%
CA-Cleaning activities	9,197	15.5%
H-Horticulture activities	38,547	65.2%
Total	59,144	100.0%

Figure 4: Graphical presentation of maintenance, by categories



Maintenance costs are intensive in the period May – September, and depend from the season of horticulture activities. Cleaning costs are distributed throughout the year and are more intensive in the period May - September.

Table 16: Monthly maintenance based on categories

Category	01	02	03	04	05	06	07	08	09	10	11	12	Total	In %
BE-Built environment	21	21	7,158	-	-	21	21	60	336	3,742	21	-	11,400	19.3%
CA-Cleaning activities	41	41	157	783	1,413	2,628	1,546	1,392	830	198	126	41	9,197	15.5%
H-Horticulture activities	-	610	1,132	3,530	7,025	7,159	7,075	7,069	3,845	1,104	-	-	38,547	65.2%
Total	62	671	8,446	4,313	8,438	9,809	8,642	8,521	5,010	5,043	147	41	59,144	100.0%
In %	0.1%	1.1%	14.3%	7.3%	14.3%	16.6%	14.6%	14.4%	8.5%	8.5%	0.2%	0.1%	100.0%	

Costs analysed on quarterly bases are intensive in the second and third quarter, with a higher participation compared to the first and fourth quarter, whereby due to the season costs are lower.

Table 17: Maintenance by categories (quarterly basis)

Category	Q1/2016	Q2/2016	Q3/2016	Q4/2016	Total	In %
BE-Built environment	7,200	21	417	3,763	11,400	19.3%
CA-Cleaning activities	239	4,825	3,768	365	9,197	15.5%
H-Horticulture activities	1,741	17,714	17,989	1,104	38,547	65.2%
Total	9,180	22,560	22,173	5,232	59,144	100.0%
In %	15.5%	38.1%	37.5%	8.8%	100.0%	

Maintenance costs, based on the semi-annual period, are higher in the first part of the year January – June, with a share of 53.7% of total annual costs. Horticulture activities have no costs effect for two periods and are proportionally distributed, whereas costs for built environment are more intensive for the first part of the year.

Table 18: Maintenance by categories (on semi-annual basis)

Category	January/June/2016	July/December/2016	Total	In %
BE-Built environment	7,221	4,180	11,400	19.3%
CA-Cleaning activities	5,064	4,133	9,197	15.5%
H-Horticulture activities	19,455	19,092	38,547	65.2%
Total	31,739	27,405	59,144	100.0%
In %	53.7%	46.3%	100.0%	

Figure 5: Graphical presentation of maintenance, by categories

Kostot e mirëmbajtjes-2016 në bazë të kategorive

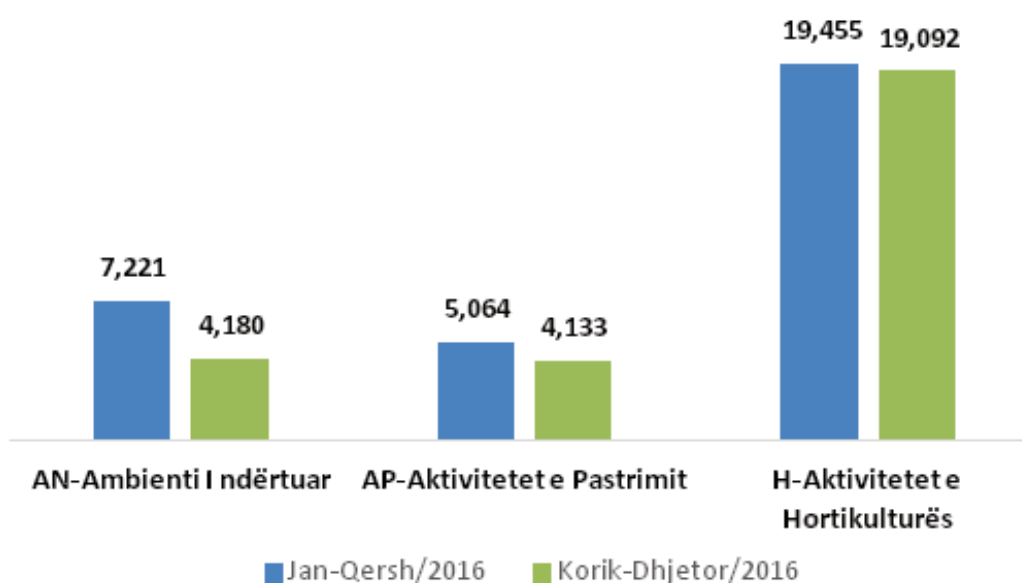


Table 19: Value of maintenance by categories

Category	Cemeteries	Park	Square	Tree	Total
BE-Built environment	7,451	3,075	874	-	11,400
CA-Cleaning activities	5,104	3,257	836	-	9,197
H-Horticulture activities	27,692	9,500	711	645	38,547
Total	40,247	15,833	2,420	645	59,144
Në %	68.0%	26.8%	4.1%	1.1%	100.0%

Costs based on the type of public open spaces are concentrated in maintenance of cemeteries, with an annual maintenance value of EUR 40.247, or expressed in percentage of 68.8 %. The high participation of this category is a large budgetary liability, which makes the maintenance of a larger number of public open spaces impossible.

Category of public open spaces for the category of annual cost for maintenance of cemeteries:

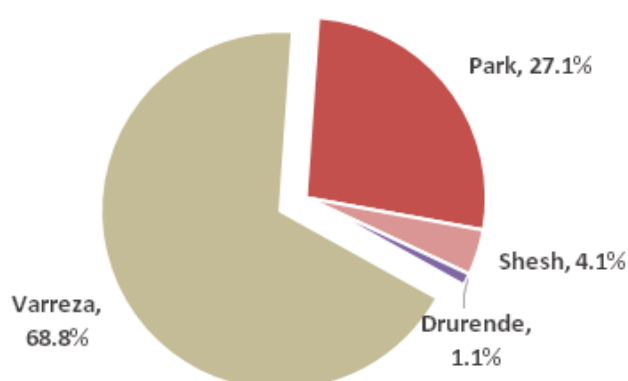
- M. C. in Reçak 10,539 (26.2%)
- Orthodox C. 94 (0.2%)
- M. C. in Mollopolc 10,523(26.1%)
- Muslim cemetery 6,351 (15.8%)
- Martyrs cemetery 12,739 (31.7%)

Table 20: Cost and area ratio

Category	Value	Value%	m ²	m ² %
Cemetery	40,247	68.8%	133,588	78.0%
Park	15,833	27.1%	36,968	21.6%
Square	2,420	4.1%	742	0.4%
Trees	645	1.1%	50	0.0%
Total	58,500	100.0%	171,297	100.0%

Figure 6: Annual costs structure

Struktura e kostove vjetore të mirëmbajtjes



4.2. Cash flow of maintenance costs and calculation of seasonal costs

Open spaces maintenance costs have a seasonal character, and are not proportionally distributed throughout the year and are very little represented in beginning and ending of the year. Funding of maintenance costs is based on contracts with economic operators for a period longer than one business year, which means that there is no significant problem in funding from of municipality sources based on the contracted relationships of committed funds.

Table 21: Monthly costs

Category	01	02	03	04	05	06	07	08	09	10	11	12	Total
Maintenance costs-2016	62	671	8,446	4,313	8,438	9,809	8,642	8,521	5,010	5,043	147	41	59,144

Figure 7: Maintenance cost for 2016

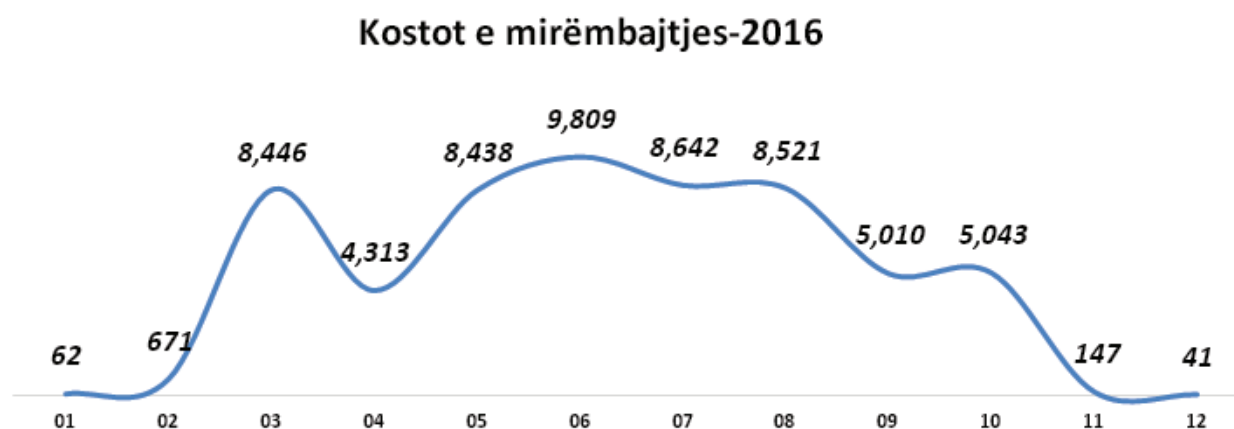


Table 22: Monthly maintenance by categories

Category	1	2	3	4	5	6	7	8	9	10	11	12	Total
Cemeteries	9	39	5,162	1,108	6,784	7,275	6,793	6,784	3,950	2,334	9	-	40,247
Park	32	535	2,103	2,749	1,560	2,361	1,724	1,517	940	2,169	117	29	15,833
Squares	21	97	544	456	93	172	125	220	119	539	21	12	2,420
Trees	-	-	638	1	1	1	1	1	1	1	-	-	645
Total	62	671	8,446	4,313	8,438	9,809	8,642	8,521	5,010	5,043	147	41	59,144

Table 23: Maintenance based on POS categories (quarterly basis). Comparative analysis for the first quarter – calculated seasonality

Category	Q1	Q2	Q3	Q4	Total
Cemeteries	5,210	15,166	17,526	2,343	40,247
Park	2,669	6,670	4,180	2,314	15,833
Squares	662	721	464	573	2,420
Trees	638	3	3	1	645
Total	9,180	22,560	22,173	5,232	59,144

4.3. Maintenance costs for the plan period 2016-2019

Planned maintenance costs for the planned 2016-2019 period are based on estimated costs for 2016, which are estimated with a growth index of an annual growth rate of 3%. The projected growth of maintenance costs is based in increasing the maintenance quality, as well as on increasing the spaces maintained in the plan period.

Table 24: Maintenance based on POS categories for the period 2016-2019

POS category	2016	2017	2018	2019
Cemetery	40,247	41,454	42,698	43,978
Park	15,833	16,308	16,797	17,301
Square	2,420	2,493	2,568	2,645
Trees	645	664	684	704
Total	59,144	60,919	62,746	64,629

Fig 8: Maintenance costs for period 2016-2019

Kostot e mirëmbajtjes për periudhën 2016-2019

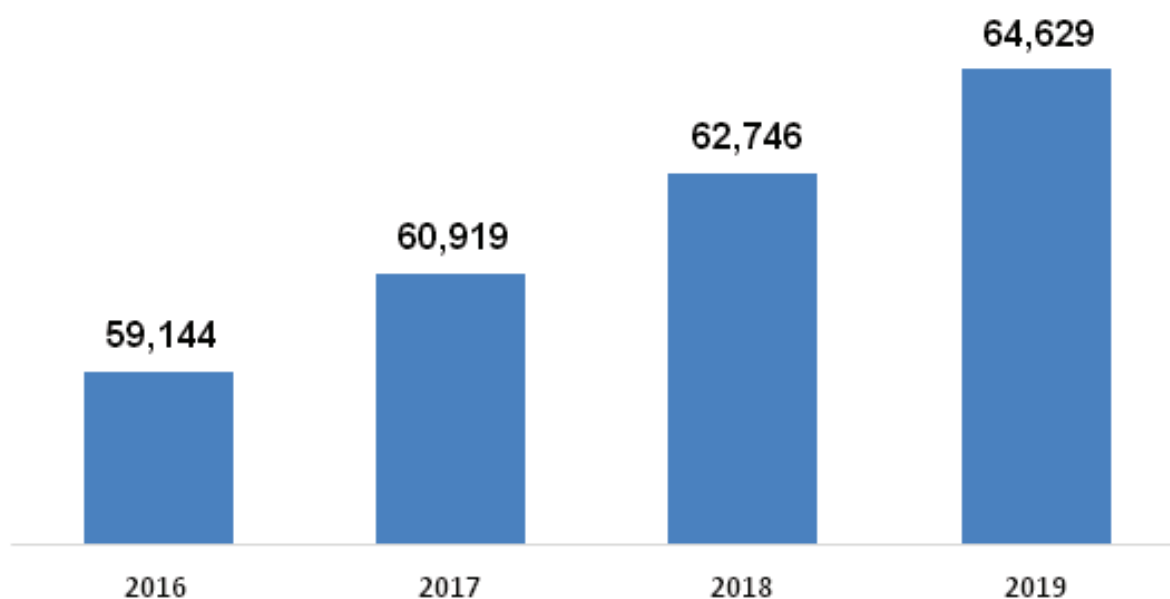


Table 25: Maintenance based on POSs for period 2016-2019

No.	POS Type	Type	2016	2017	2018	2019
1	Martyrs Cemetery	Cemetery	12,739	13,121	13,515	13,921
2	Memorial Complex in Reçak	Cemetery	10,539	10,855	11,180	11,516
3	Martyrs Cemetery "Mollopolc"	Cemetery	10,523	10,839	11,164	11,499
4	"Ahmet Shtimja" Park	Park	7,428	7,651	7,880	8,117
5	Muslim Cemeteries	Cemetery	6,351	6,542	6,738	6,940
6	"QKMF" Park	Park	2,405	2,477	2,551	2,628
7	"Petrove" park	Park	2,089	2,152	2,216	2,283
8	Martyrs Square	Square	1,564	1,611	1,660	1,709
9	"K.Kumanova" Park	Park	1,399	1,441	1,484	1,528
10	KLA square	Square	856	882	908	935
11	The park near youth centre	Park	710	732	754	776
12	Pine park	Park	645	664	684	705
13	Park 1	Park	610	628	647	666
14	Trees along A. Jashari street	Trees	462	476	490	505
15	"Rashnice" Park	Park	306	315	324	334
16	"Muzeqine" Park	Park	242	249	256	264
17	Trees along K.Kumanova street	Trees	183	188	194	200
18	Orthodox Cemeteries	Cemetery	94	97	100	103
	Total		59,144	60,919	62,746	64,629

Table 26: Detailed POS comprehensive table

Project	Category	Total	1-6	7-12	AN	AP	H	in m ²	No. of activities
Martyrs Cemetery	Cemetery	12,739	5,507	7,232	1,634	1,702	9,403	39,642	28
M.C in Reçak	Cemetery	10,539	6,528	4,011	4,319	1,109	5,110	26,159	34
M.C Mollo- polc	Cemetery	10,523	4,575	5,948	1,458	1,327	7,738	32,782	21
“Ahmet Shtimja” Park	Park	7,428	4,394	3,034	1,431	1,498	4,499	2,809	206
Muslim C.	Cemetery	6,351	3,720	2,632	40	871	5,441	32,646	9
“QKMF” Park	Park	2,405	1,321	1,084	841	162	1,401	4,752	42
“Petrove” park	Park	2,089	1,116	973	592	159	1,338	5,353	24
Martyrs Square	Square	1,564	792	772	660	604	301	389	112
“K.Kumanova” Park	Park	1,399	715	684	160	52	1,187	1,470	94
KLA square	Square	856	591	265	214	232	410	353	143
The park near youth centre	Park	710	710	-	-	710	-	8,881	42
Pine park	Park	645	431	213	14	612	19	10,199	10
Park 1	Park	610	256	354	20	-	590	1,181	6
Trees along A. Jashari street	Trees	462	459	3	-	-	462	36	17
“Rashnice” Park	Park	306	168	137	4	27	275	993	18
“Muzeqine” Park	Park	242	226	16	13	37	192	1,329	20
Trees along K.Kumanova street	Trees	183	182	1	-	-	183	14	17
Orthodox C.	Cemetery	94	47	47	-	94	-	2,359	2
Total Grand		59,144	31,739	27,405	11,400	9,197	38,547	171,348	845

5. PUBLIC AWARENESS

5.1. Municipal strategy for community activities

1. Environmental awareness through education

Directorate for Public Services, in cooperation with the Directorate of Education, will organize periodic lectures, as follows:

1. Lectures/presentations for primary school pupils in order to provide basic knowledge on environmental issues and problems, focusing on providing information for POS in the municipality of Shtime, and their maintenance.
2. Lectures/presentations for high schools students in order to understand environmental problems and develop skills for handling environmental problems.

2. Awareness through media campaigns

The Media can play an essential role in environmental awareness through environmental programs, interviews with relevant stakeholders, presentations, publishing press releases for maintenance activities, etc.

Organized activities for POS maintenance shall be preceded by a media campaign inviting citizens to contribute in the POS maintenance, focusing on cleaning and horticulture activities. The Directorate for Public Services, namely the Information Office, is responsible for organizing media campaigns.

3. Awareness through campaigns

Every stakeholder who can contribute to the preservation of the environment should be included in the POS maintenance activities. Non-governmental organizations, which deal with environment protection, are important for ensuring the information and participation of the community in the maintenance activities.

The willingness of NGOs and division of activities should be available after meetings organized by the Directorate for Public Services. NGOs shall play an active role in monitoring the municipality, namely the directorate responsible for different activities, and the efficiency and quality of POS maintenance.

Local heads and representatives of communities shall be invited to organize POS maintenance activities within their community, and the Directorate shall support this type of organizations.

Activities

The beginning of spring season also marks the intensification of maintenance activities, namely cleaning and horticultural activities. Spring activities are focused on:

- Cleaning and arranging green areas
- Planting trees

Promoting “Best maintained locality”

Organizing monitoring and awarding adequate prizes for:

- Best maintained locality
- Best maintained neighbourhood
- Best maintained partner

6. MONITORING AND REVIEW

The municipality of Shtime, namely the Directorate for Public Services shall appoint an official, who shall be responsible for coordinating works and “monitoring and assessing implementation of PSMP, projects and activities in accordance with the approved plan”.

Monitoring and assessment will be conducted by following the procedures below:

1. Defining project implementation aspects that will be monitored by the responsible official.
2. Designing forms for registering data in order to assess the project implementation progress.
3. Collection of data from visits conducted at the POS, interviewing the stakeholders in project implementation and examination of reports.
4. Identification of reasons in case of any eventual delay in project implementation and analysis of materials used for the project implementation.
5. Submission of 6 month report's findings to relevant institutions (Directorate for Public Services and the Committee on Public Services) identifying issues and setting the time period for improvements.
6. Continuous field visits and confirmation that the deficiencies have been remedied.
7. Assessment of projects implemented and analysis of effects on the community and beneficiaries. Assessment results may be used in establishing the policies for POS management.

Completion and revision of POSMP

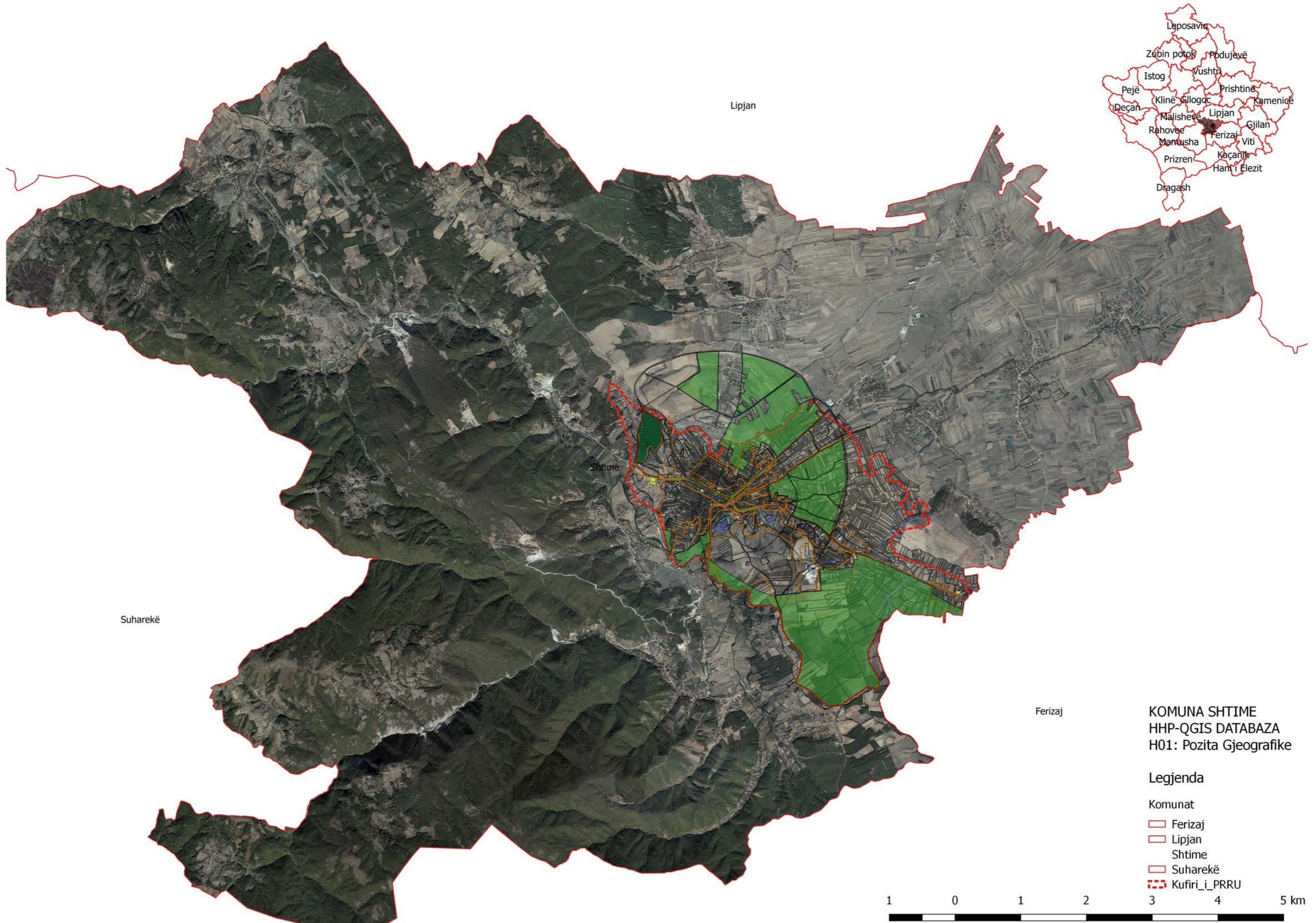
Completion of the plan refers to minor changes in the plan and can be done by means of a decision issued by the Office of the Mayor, while the revision of the plan refers to the plan's major changes as a result of substantial changes to the goals and objectives of the plan. Revision of the plan shall follow the same procedures as those employed for its drafting.

a) **Some of areas which are subject to completion**

Minor changes in the objectives, strategies and policies (delivery services standards, etc.)

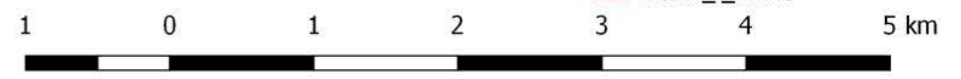
a) **Steps that shall be followed for completing the plan**

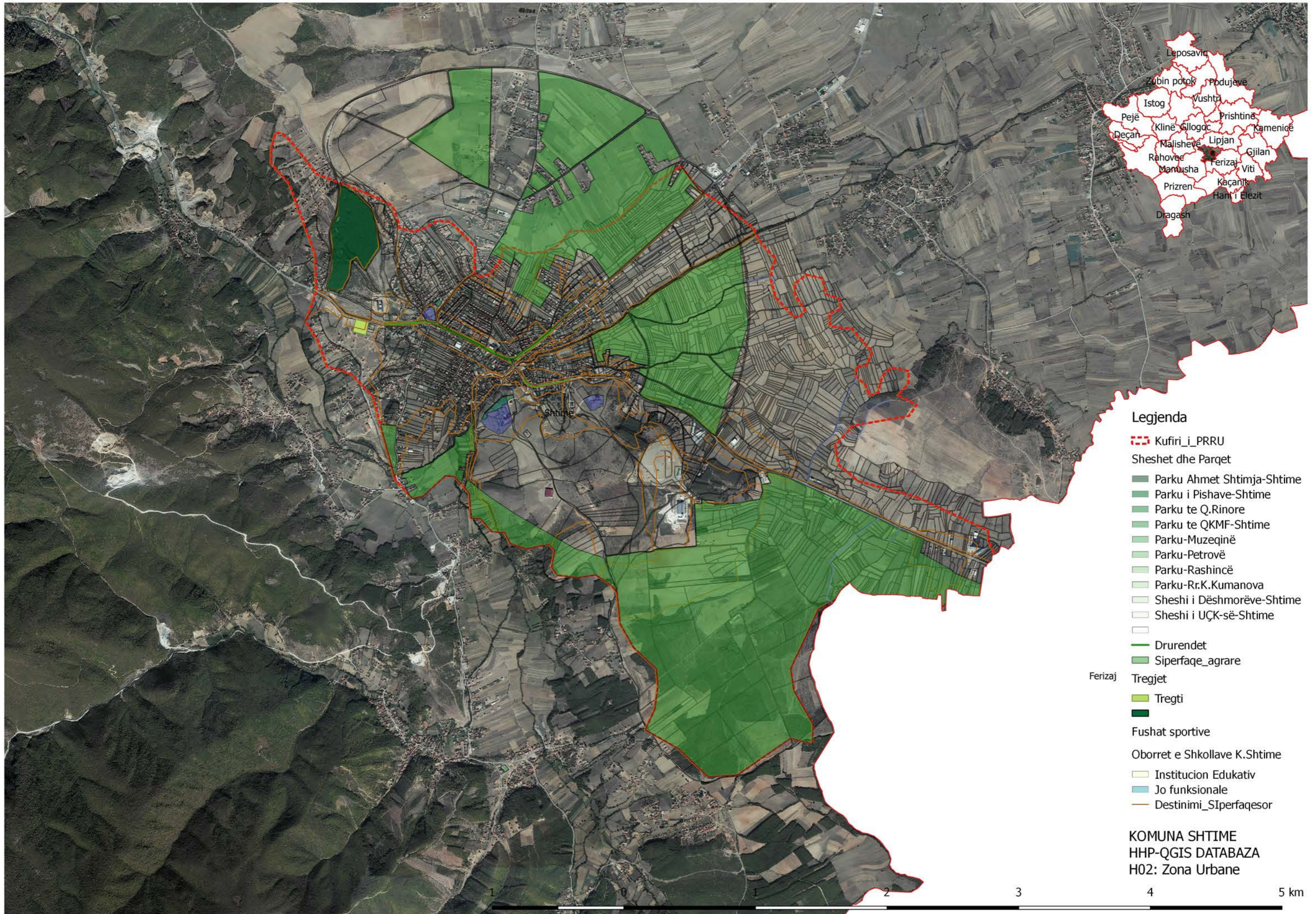
1. Preparing proposals for completing the plan. The same can be prepared by the official responsible for monitoring POSMP, citizens etc.
2. The Directorate for Public Services shall analyze the proposal and the overall implications to the plan, and shall prepare a report which will then be sent to the Planning Committee. The report consists of:
 - Nature of the PSMP
 - The purpose of PSMP completion
 - Specification of the part of the plan to be changed
 - Reasoning for the change of the plan
 - Proposed policies



KOMUNA SHTIME
 HHP-QGIS DATABAZA
 H01: Pozita Gjeografike

- Legjenda
- Komunat
- Ferizaj
 - Lipjan
 - Shtime
 - Suharekë
 - ▬ Kufiri_i_PRRU



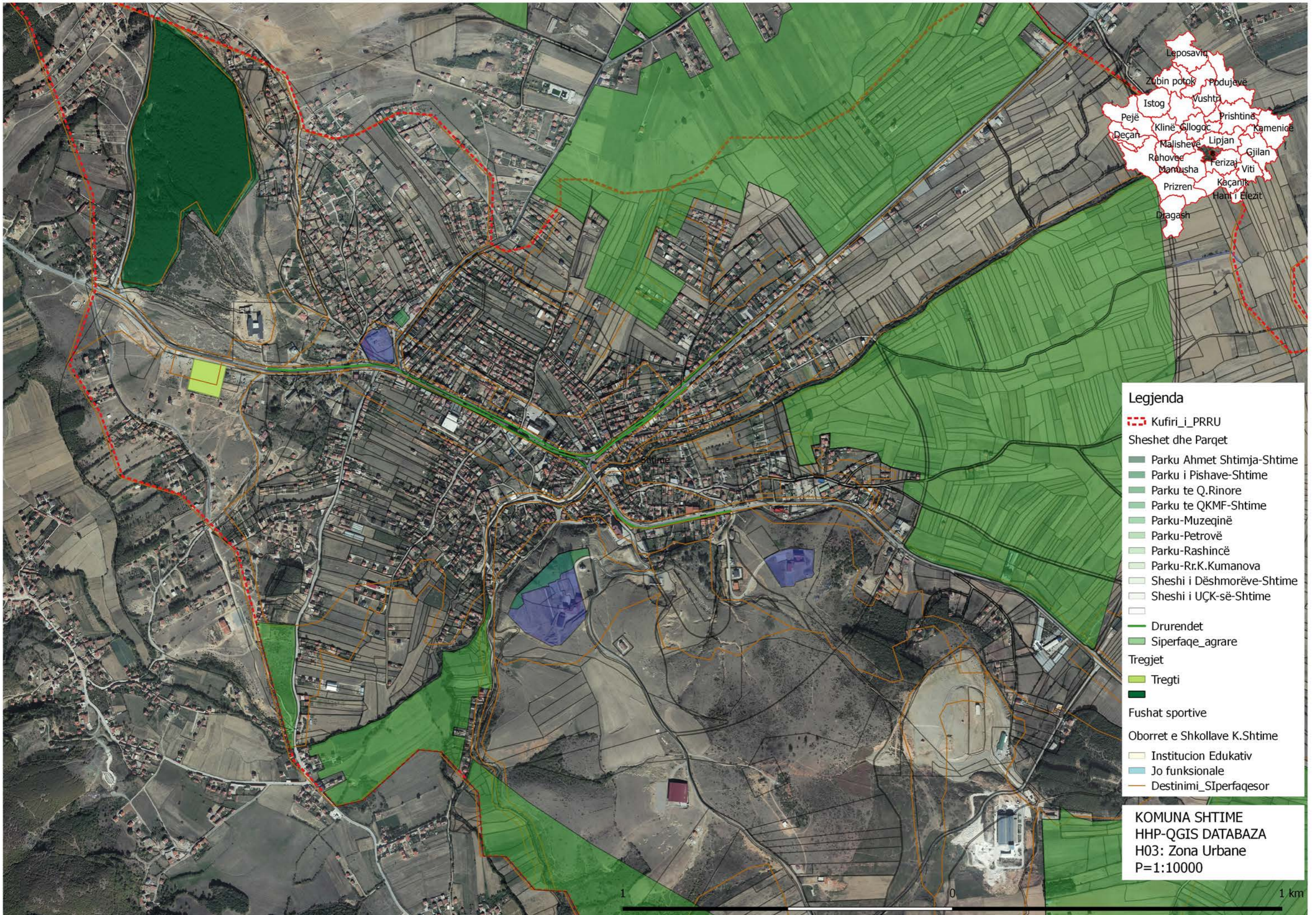


Legjenda

- - - Kufiri_i_PRRU
- Sheshet dhe Parqet
 - Parku Ahmet Shtimja-Shtime
 - Parku i Pishave-Shtime
 - Parku te Q.Rinore
 - Parku te QKMF-Shtime
 - Parku-Muzeqinë
 - Parku-Petrovë
 - Parku-Rashincë
 - Parku-Rr.K.Kumanova
 - Sheshi i Dëshmorëve-Shtime
 - Sheshi i UÇK-së-Shtime
- Drurendet
- Siperfaqe_agrare
- Ferizaj Tregjet
 - Tregti
 - Tregti
- Fushat sportive
- Oborret e Shkollave K.Shtime
 - Institucion Edukativ
 - Jo funksionale
 - Destinimi_Siperfaqesor

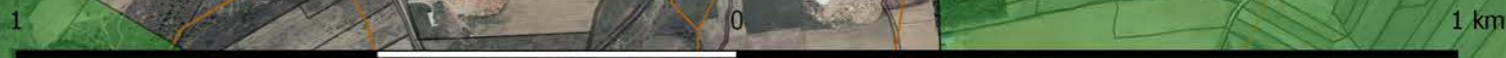
KOMUNA SHTIME
 HHP-QGIS DATABAZA
 H02: Zona Urbane

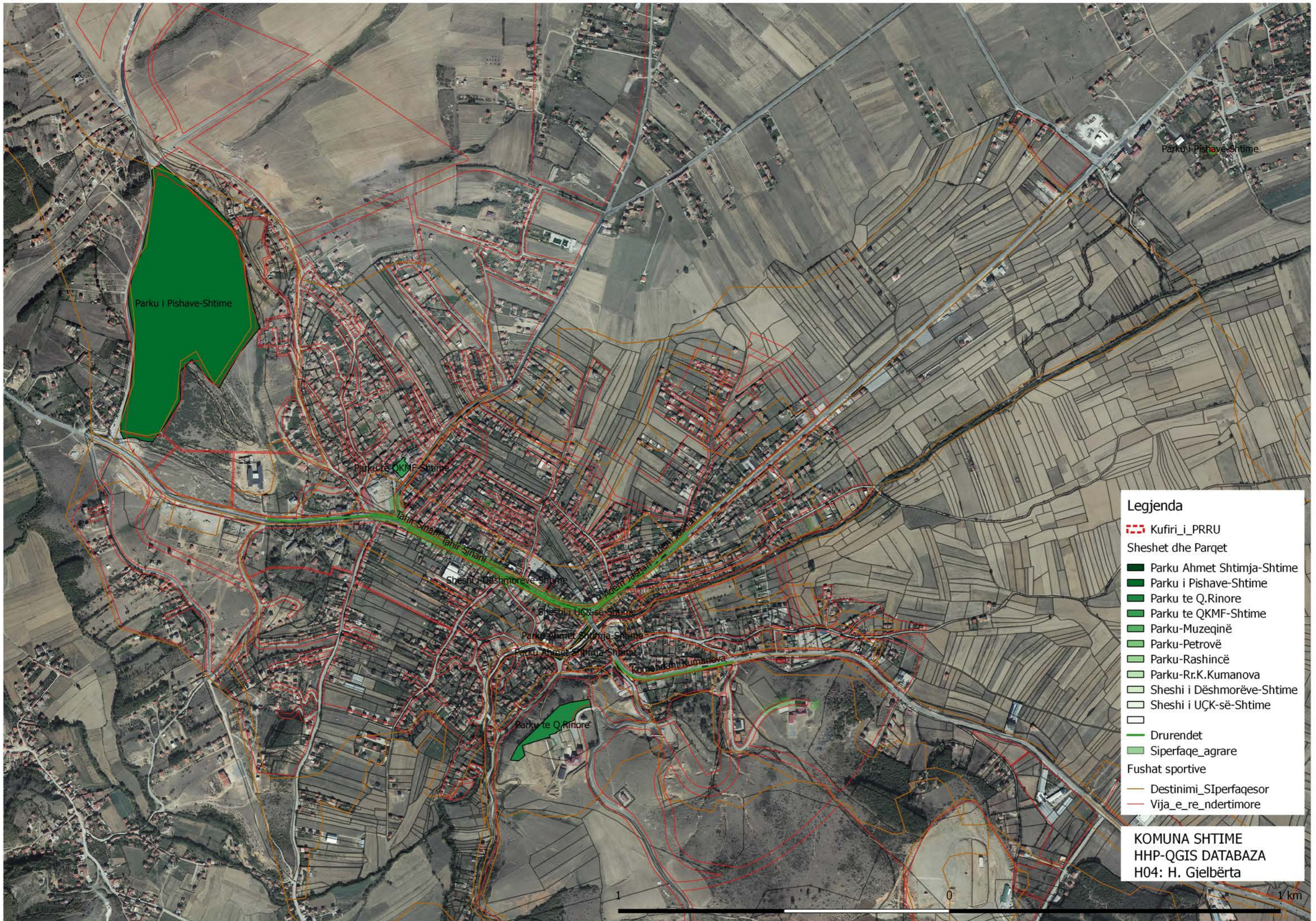




- Legjenda**
- - - Kufiri_i_PRRU
 - Sheshet dhe Parqet**
 - Parku Ahmet Shtimja-Shtime
 - Parku i Pishave-Shtime
 - Parku te Q.Rinore
 - Parku te QKMF-Shtime
 - Parku-Muzeqinë
 - Parku-Petrovë
 - Parku-Rashincë
 - Parku-Rr.K.Kumanova
 - Sheshi i Dëshmorëve-Shtime
 - Sheshi i UÇK-së-Shtime
 - Drurendet
 - Siperfaqe_agrare
 - Tregjet**
 - Tregti
 - Fushat sportive**
 - Oborret e Shkollave K.Shtime**
 - Institucion Edukativ
 - Jo funksionale
 - Destinimi_Siperfaqesor

KOMUNA SHTIME
 HHP-QGIS DATABAZA
 H03: Zona Urbane
 P=1:10000



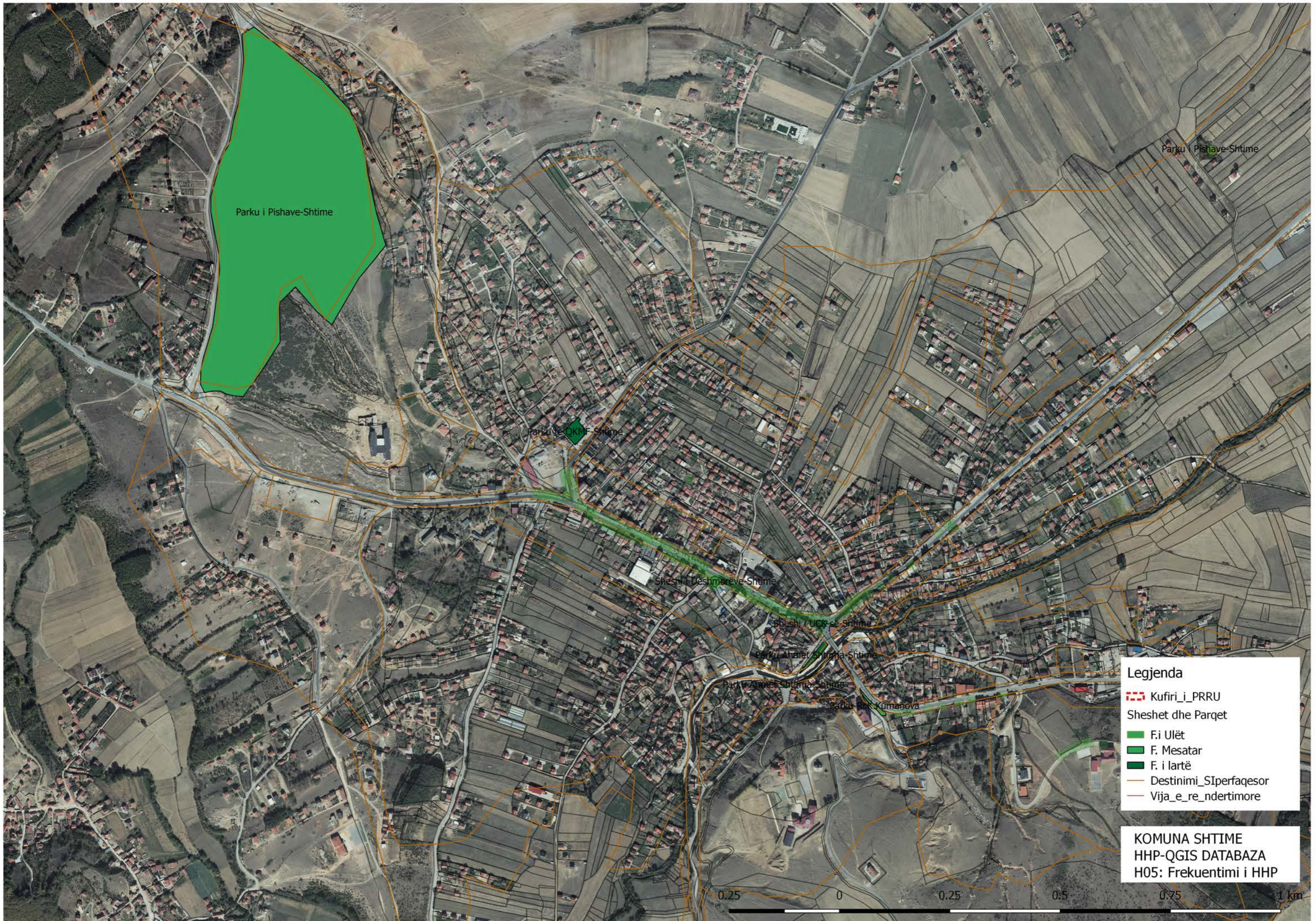


Legjenda

- ▬▬▬ Kufiri_i_PRRU
- Sheshet dhe Parqet**
- Parku Ahmet Shtimja-Shtime
- Parku i Pishave-Shtime
- Parku te Q.Rinore
- Parku te QKMF-Shtime
- Parku-Muzeqinë
- Parku-Petrovë
- Parku-Rashincë
- Parku-Rr.K.Kumanova
- Sheshi i Dëshmorëve-Shtime
- Sheshi i UÇK-së-Shtime
- Drurendet
- Siperfaqe_agrare
- Fushat sportive**
- Destinimi_Siperfaqesor
- Vija_e_re_ndertimore

KOMUNA SHTIME
HHP-QGIS DATABAZA
H04: H. Gielbërta





Legjenda

- Kufiri_i_PRRU
- Sheshet dhe Parqet
- F. i Ulët
- F. Mesatar
- F. i lartë
- Destinimi_Siperfaqesor
- Vija_e_re_ndertimore

KOMUNA SHTIME
HHP-QGIS DATABAZA
H05: Frekuentimi i HHP





Legjenda

- Kufiri_i_PRRU
- Sheshet dhe Parqet
- F. i Ulët
- F. Mesatar
- F. i lartë
- Destinimi_Siperfaqesor
- Vija_e_re_nderitimore radiuset

KOMUNA SHTIME
HHP-QGIS DATABAZA
H06: Mbulueshmëria me HHP





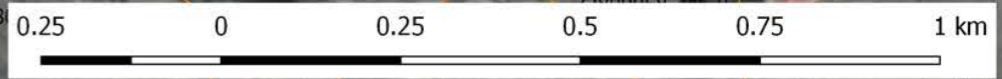
Parku-Muzeqinë

Legjenda

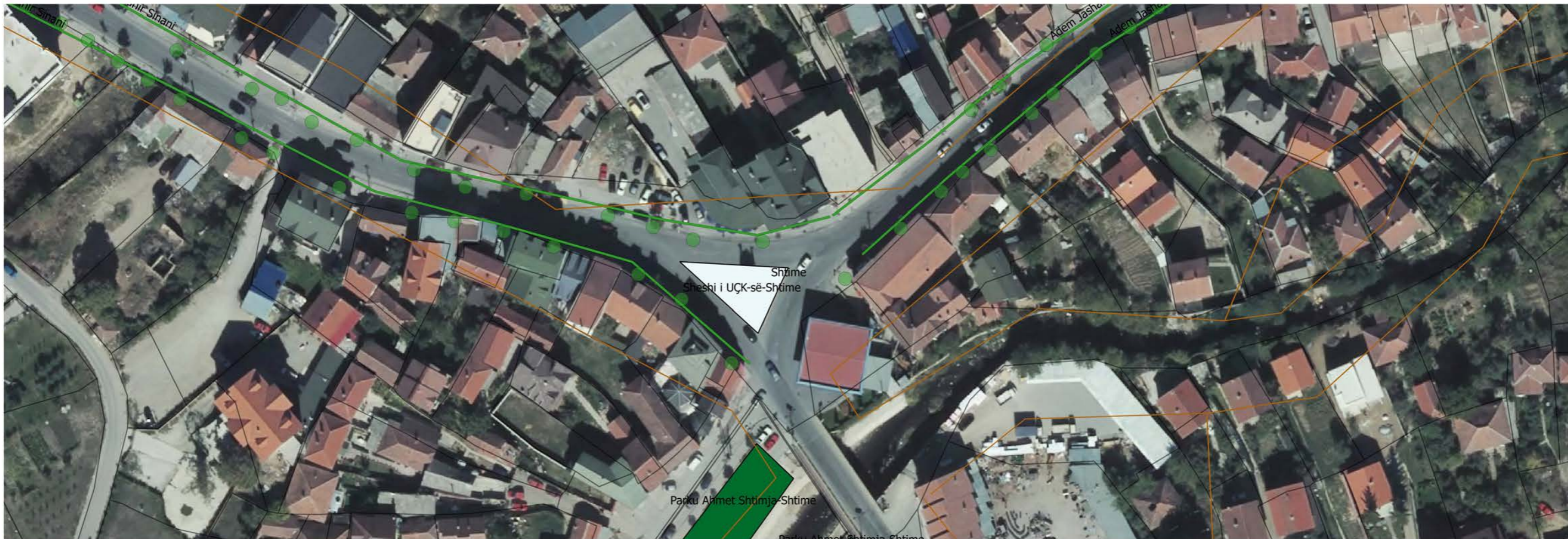
Sheshet dhe Parqet

- Parku-Muzeqinë
- Z Kadastrale Muzeqinë

KOMUNA SHTIME
HHP-QGIS DATABAZA
H07: HHP ne ZR
Parku ne Muzeqinë







POSMP Shtime-PARKS

2. Park nearby “MFMC”

POS Name	Code	Code/Description	Activity description	Area	Unit	Unit price	Total price (annual)	No. of activities (annual)	Number of activities undertaken at POS during the period of maintenance activities											
									January	February	March	April	May	June	July	August	September	October	November	December
2. Park nearby “MFMC”	CA	Cleaning Activities	Collection and disposal of waste	1691.00	m ²	€ 0.02	€ 135.28	4				2		2						
	CA	Cleaning Activities	Cleaning of paths	338.20	m ²	€ 0.02	€ 27.06	4					1	1	1	1				
	H	Horticultural activities	Irrigation	1352.80	m ²	€ 0.01	€ 94.70	7					1	2	2	2				
	H	Horticultural activities	Mowing the grass	1352.80	m ²	€ 0.10	€ 1,082.24	8					2	2	2	2				
	H	Horticultural activities	Planting high greenery- new trees	2.00	piece	€ 74.00	€ 148.00	1			1									
	H	Horticultural activities	Maintenance of high greenery/ pruning trees	4.00	piece	€ 9.50	€ 76.00	2			1							1		
	BE	Built environment	Installation of flagpoles with concrete foundation, with flag mast ropes/wires. Dimension of poles 2”, wall thickness t=2.5mm, height l=4.0-5.0m	1.00	piece	€ 20.00	€ 20.00	1				1								
	BE	Built environment	Placing the flags	1.00	piece	€ 3.00	€ 18.00	6	1	1	1				1	1				1
	BE	Built environment	Maintainance of urban furnitures/ benches	2.00	piece	€ 20.00	€ 40.00	1				1								
	BE	Built environment	Maintenance of urban furniture – metal bins	2.00	piece	€ 20.00	€ 80.00	2				1							1	
	BE	Built environment	Maintenance of paths with cobblestones	16.91	m ²	€ 14.00	€ 473.48	2				1							1	
	BE	Built environment	Maintenance of lighting (replacement of light bulbs)	4.00	piece	€ 20.00	€ 160.00	2				1							1	
BE	Built environment	Maintenance of monuments	1.00			€ 50.00	1				1									
				1691.00			€ 2,404.75													

3. Park nearby “Youth Center”

POS Name	Code	Code/Description	Activity description	Area	Unit	Unit price	Total price (annual)	No. of activities (annual)	Number of activities undertaken at POS during the period of maintenance activities											
									January	February	March	April	May	June	July	August	September	October	November	December
3. Park near- by “Youth Center”	CA	Cleaning Activities	Collection and disposal of waste	8881.00	m ²	€ 0.02	€ 710.48	4				2		2						
				8881.00			€ 710.48													

4. "Komandant Kumanova" Park

POS Name	Code	Code/Description	Activity description	Area	Unit	Unit price	Total price (annual)	No. of activities (annual)	Number of activities undertaken at POS during the period of maintenance activities											
									January	February	March	April	May	June	July	August	September	October	November	December
4. "Komandant Kumanova" Park	CA	Cleaning Activities	Collection and disposal of waste	494.00	m ²	€ 0.02	€ 39.52	4				2		2						
	CA	Cleaning Activities	Cleaning of paths	12.00	m ²	€ 0.02	€ 12.72	53	1	1	2	4	4	8	8	8	8	4	4	1
	H	Horticultural activities	Irrigation	482.00	m ²	€ 0.01	€ 33.74	7					1	2	2	2				
	H	Horticultural activities	Mowing the grass	482.00	m ²	€ 0.10	€ 771.20	16			2	3	3	3	3	2				
	H	Horticultural activities	Tilling high greenery	1.00	activ.	€ 0.80	€ 1.60	2		1							1			
	H	Horticultural activities	Planting high greenery- new trees	2.00	piece	€ 74.00	€ 148.00	1		1										
	H	Horticultural activities	Maintenance of medium greenery (shrubs)	8.00	piece	€ 5.00	€ 80.00	2		1							1			
	H	Horticultural activities	Maintenance of high greenery/ pruning trees	8.00	piece	€ 9.50	€ 152.00	2		1							1			
	H	Horticultural activities	Disinfection	0.00			€ -	0												
	BE	Built environment	Maintenance of urban furniture – metal bins	2.00	piece	€ 20.00	€ 80.00	2			1								1	
BE	Built environment	Maintenance of lighting (replacement of light bulbs)	2.00	piece	€ 20.00	€ 80.00	2			1								1		
				494.00			€ 1,398.78													

5. Parku I Pishave (Pine Park)

POS Name	Code	Code/Description	Activity description	Area	Unit	Unit price	Total price (annual)	No. of activities (annual)	Number of activities undertaken at POS during the period of maintenance activities												
									January	February	March	April	May	June	July	August	September	October	November	December	
	CA	Cleaning Activities	Cleaning fountains	0.00			€ -	0													
	CA	Cleaning Activities	Cleaning paths	10198.30	m ²	€ 0.02	€ 611.90	3					1	1	1						
	H	Horticultural activities	Disinfection	1.00	activ.	€ 33.00	€ 33.00	1			1										
				10198.30			€ 644.90														

POSMP Shtime -PARKS

5. (ZR) "Park in Muzeqinë"

POS Name	Code	Code/Description	Activity description	Area	Unit	Unit price	Total price (annual)	No. of activities (annual)	Number of activities undertaken at POS during the period of maintenance activities												
									January	February	March	April	May	June	July	August	September	October	November	December	
5. (ZR) "Park in Muzeqinë"	CA	Cleaning Activities	Collection and disposal of waste	446.00	m ²	€ 0.02	€ 35.68	4				2		2							
	CA	Cleaning Activities	Cleaning paths	9.00	m ²	€ 0.02	€ 1.08	6				1	1	1	1	1	1				
	H	Horticultural activities	Irrigation	437.00	m ²	€ 0.01	€ 17.48	4					1	1	1	1					
	H	Horticultural activities	Mowing the grass	437.00	m ²	€ 0.10	€ 174.80	4				2		2							
	BE	Built environment	Maintenance of paths with cobblestones	0.45	m ²	€ 14.00	€ 12.60	2			1									1	
				446.00			€ 241.64														

5. (ZR) "Park in Petrovë"

POS Name	Code	Code/Description	Activity description	Area	Unit	Unit price	Total price (annual)	No. of activities (annual)	Number of activities undertaken at POS during the period of maintenance activities											
									January	February	March	April	May	June	July	August	September	October	November	December
5. (ZR) "Park in Petrovë"	CA	Cleaning Activities	Collection and disposal of waste	1898.00	m ²	€ 0.02	€ 151.84	4				2		2						
	CA	Cleaning Activities	Cleaning paths	360.00	m ²	€ 0.02	€ 7.20	1				1								
	H	Horticultural activities	Irrigation	1538.00	m ²	€ 0.01	€ 107.66	7					1	2	2	2				
	H	Horticultural activities	Mowing the grass	1538.00	m ²	€ 0.10	€ 1,230.40	8					2	2	2	2				
	BE	Built Environment	Maintenance of fences	2.00	activ.	€ 85.00	€ 340.00	2			1								1	
	BE	Built Environment	Maintenance of paths with cobblestones	18.00	m ²	€ 14.00	€ 252.00	1			1									
				1898.00			€ 2,089.10													

POSMP Shtime-PARKS

6. (ZR) "Park in Rashnicë"

POS Name	Code	Code/Description	Activity description	Area	Unit	Unit price	Total price (annual)	No. of activities (annual)	Number of activities undertaken at POS during the period of maintenance activities											
									January	February	March	April	May	June	July	August	September	October	November	December
6. (ZR) "Park in Rashnicë"	CA	Cleaning Activities	Collection and disposal of waste	333.00	m ²	€ 0.02	€ 26.64	4				2		2						
	CA	Cleaning Activities	Cleaning paths	6.00	m ²	€ 0.02	€ 0.12	1				1								
	H	Horticultural activities	Irrigation	327.00	m ²	€ 0.01	€ 13.08	4					1	1	1	1				
	H	Horticultural activities	Mowing the grass	327.00	m ²	€ 0.10	€ 261.60	8					2	2	2	2				
	BE	Built Environment	Maintenance of paths with cobblestones	0.30	m ²	€ 14.00	€ 4.20	1			1									
				333.00			€ 305.64													

POSMP Shtime- Squares

1. "UÇK" Square

POS Name	Code	Code/Description	Activity description	Area	Unit	Unit price	Total price (annual)	No. of activities (annual)	Number of activities undertaken at POS during the period of maintenance activities											
									January	February	March	April	May	June	July	August	September	October	November	December
1. "UÇK" Square	CA	Cleaning Activities	Collection and disposal of waste	232.00	m ²	€ 0.02	€ 232.00	50	1	1	2	4	4	8	8	8	8	4	1	1
	H	Horticultural activities	Irrigation	60.00	m ²	€ 0.01	€ 12.00	20					1	3	8	8				
	H	Horticultural activities	Tilling low greenery	60.00	m ²	€ 0.05	€ 48.00	16				2	4	4	4	2				
	H	Horticultural activities	Planting flowers	1000.00	piece	€ 0.35	€ 350.00	1				1								
	BE	Built Environment	Installation of flagpoles with concrete foundation, with flag mast ropes/wires. Dimension of poles 2", wall thickness t=2.5mm, height l=4.0-5.0m	3.00	piece	€ 20.00	€ 120.00	2			1						1			
	BE	Built Environment	Placing the flags	3.00		€ 3.00	€ 54.00	6	1	1	1		1	1					1	
	BE	Built Environment	Maintenance of paths with cobblestones	2.00	m ²	€ 20.00	€ 40.00	1		1										
				232.00			€ 856.00													

5. Memorial Complex in Reqak

Number of activities undertaken at POS during the period of maintenance activities

POS Name	Code	Code/Description	Activity description	Area	Unit	Unit price	Total price (annual)	No. of activities (annual)	January	February	March	April	May	June	July	August	September	October	November	December
5. Memorial Complex in Reqak	CA	Cleaning Activities	Collection and disposal of waste	12917.00	m ²	€ 0.02	€ 1,033.36	4					1	1	1	1				
	CA	Cleaning Activities	Cleaning of paths	318.00	m ²	€ 0.02	€ 25.44	4					1	1	1	1				
	H	Horticultural activities	Mowing the grass	12599.00	m ²	€ 0.10	€ 5,039.60	4					1	1	1	1				
	H	Horticultural activities	Planting high greenery- new trees	2.00	lt	€ 74.00	€ 1,480.00	10			5								5	
	H	Horticultural activities	Maintenance of high greenery/ pruning trees	16.00	piece	€ 9.50	€ 304.00	2			1								1	
	BE	Built Environment	Maintainance of urban furnitures/benches	4.00	piece	€ 20.00	€ 160.00	2			1								1	
	BE	Built Environment	Maintenance of fountains	2.00	activ.	€ 50.00	€ 200.00	2			1								1	
	BE	Built Environment	Maintenance of lighting (replacement of light bulbs)	8.00	piece	€ 20.00	€ 320.00	2			1								1	
	BE	Built Environment	Maintenance of monuments	1.00	activ.	€ 150.00	€ 300.00	2			1								1	
				12917.00			€ 8,862.40													

